



A **CARLISLE** COMPANY

TAKING SELECTION EVEN FURTHER

ALL PRODUCTS CATALOG



Walker History

Walker Stainless Equipment Company, Inc. has served the Dairy, Food, Beverage, Pharmaceutical and Chemical Industries with over five decades of excellence.

It was 1943 and wartime. Chicago Fabricator Bob Walker recognized a problem - how to meet the needs of dairy farmers and processors in a time of restrictions on transportation, materials and skilled help. His solution was to relocate his fabrication business to Wisconsin, the national center of dairy production. Here his business grew with the industry. That growth was stimulated by Walker's unique combination of objectives - to serve the dairymen with excellence - to recruit and develop the best design and production specialists in the industry - to innovate and expand the state-of-the-art in stainless steel fabrication.

Beginning in 1943, Walker Welding and Machine strived to develop the very first bulk milk truck in the world and fulfilled that dream in 1953. The demand for the modern bulk tank rapidly grew, requiring expansion into the second facility devoted exclusively to the production of milk storage tanks. In 1959, Walker again led the industry with the introduction of the first fiberglass-jacketed milk storage tank and one year later, the first elliptical fiberglass-jacketed bulk pickup tank.

Since 1996, Walker has been a proud subsidiary of the Carlisle Companies Incorporated of Syracuse, New York, permitting excellent opportunities for plant expansion, new facilities, research and development and improved manufacturing processes.

The combination of our history, from our founders to our current Carlisle leadership, our expertise and our core values will serve to provide you with world-class products.



Frame & Cradle Transport

Capacity	6,200 U.S. Gallons	Hubs	Conmet, Aluminum 10-Stub Hub Piloted With 5 Year/500,000 Mile Warranty
Code	3-A Sanitary	Tires	11R-22.5 (G) Goodyear Wingfoot Radials With 14-Ply Rating
Shell Material	12 Gauge T304 Stainless Steel With #4 Finish & WS Welds	Wheels	8.25 X 22.5 For 10 Hole Hubs, Aluminum Mill Finish, Hub Piloted
Head Material	11 Gauge T304 Stainless Steel With #4 Finish & WS Welds	Ladder	Two T304 Stainless Steel With Platform Top Step And Dimpled Channel Rungs (Located One Each Side)
Manhole	One Walker 19" Stainless Steel Sanitary With Stainless Steel Dust Cover	Outlet Valve	Thomsen 3" 60TTF Valve With Aluminum Dust Hood
Frame & Cradle	Aluminum	Lights	Truck-Lite Lights & Harness System, Side Center Marker Lights Wired To Flash With Turn Signals
Insulation	3" Polyurethane In Cradle And On Heads 3" Polystyrene On Sides And Top		
Jacketing	22 Gauge Bright Annealed T304 Stainless Steel		
Suspension	Hendrickson Intraax With 5" Intergral Axle, 71.5" Track And 23,000 Lb. Rating		



3-A Transport With Aluminum Wrap

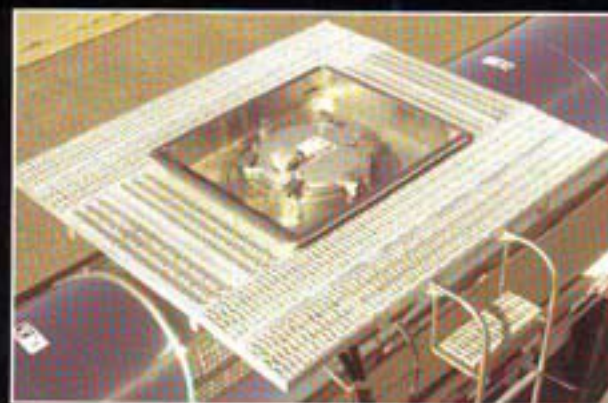


Direct Ship Cabinet



Foodgrade Transport

Capacity	Standard Oil Model - 7,000 U.S. Gallons Standard Sweetener Model - 5,000 U.S. Gallons	Suspension	Hendrickson Intraax With 5" Intergral Axle, 71.5" Track And 23,000 Lb. Rating
Code	Foodgrade	Hubs	Conmet, Aluminum 10-Stud Hub Piloted With 5 Year/500,000 Mile Warranty
Shell Material	Oil Model - 4" - 10 Gauge Bottom, Balance 12 Gauge T304 Stainless Steel With #4 Finish & W5 Welds Sweetener Model - 12 Gauge T304 Stainless Steel With #4 Finish & W5 Weld Finish	Ladder	One T304 Stainless Steel With Platform Top Step And Dimpled Channel Rungs (Located Curbside)
Head Material	11 Gauge T304 Stainless Steel With #4 Finish & W5 Welds	Walkway	18.75" Wide Aluminum Walkway, 4 Sides
Heat System	Oil Model - Full Length T304 Stainless Steel System Equipped For In-Transit Heat Sweetener Model - None	Spilldam	Rectangular Design, 34" X 40"
Manhole	Betts Foodgrade With 6 Hold-Downs	Foodgrade Cabinet	Two-Door Foodgrade Cabinet With Hardware And Latch On Curbside
Cradle & Frame	Aluminum	Hydraulic Lines	Stainless Steel Hydraulic Lines And Brackets Provided With Hydraulic Control
Insulation	3" Urethane	Pump	Oil Model - Driveside Mounted Hydraulic Pump Sweetener Model - Center Mounted Hydraulic Pump
Jacketing	22 Gauge Bright Annealed T304 Stainless Steel	Hose Carrier	Two 6" X 22' Aluminum, Located Throughout Suspension And Into Cabinet
Outer Heads	18 Gauge Blown Heads #3 Finish		



34" X 40" Spilldam With 18-3/4" Walkway Assembly



Rear Cabinet



Bolster Transport

Capacity	6,200 U.S. Gallons	Suspension/Landing Gear Frame	Aluminum
Code	3-A Sanitary	Hubs	Conmet, Aluminum 10-Stud Hub Piloted With 5 Year/500,000 Mile Warranty
Shell Material	12 Gauge T304 Stainless Steel With #4 Finish & W5 Welds	Tires	11R-22.5 (G) Goodyear Wingfoot Radials With 14-Ply Rating
Head Material	11 Gauge T304 Stainless Steel With #4 Finish & W5 Welds	Wheels	8.25 X 22.5 For 10 Hole Hubs, Aluminum Mill Finish, Hub Piloted
Manhole	One Walker 19" Stainless Steel Sanitary With Stainless Steel Dust Cover	Ladder	Two T304 Stainless Steel With Platform Top Step And Dimpled Channel Rungs (Located One Each Side)
Reinforcing Rings	Stainless Section Welded To Barrel	Lights	Truck-Lite Lights & Harness System, Side Center Marker Lights Wired To Flash With Turn Signals
Shell Subframe	T304 Stainless Steel Crossmember, Outriggers And Gussets		
Insulation	3" Polystyrene		
Jacketing	22 Gauge Bright Annealed T304 Stainless Steel		
Outer Heads	18 Gauge Blown Heads With #3 Finish		
Suspension	Hendrickson Intraax With 5" Intergral Axle, 71.5" Track And 23,000 Lb. Rating		



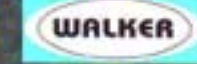
Non-Insulated Bolster Transport



Pumping Cabinet

FOODGRADE TRANSPORT

BOLSTER TRANSPORT





DOT-407

Capacity	7,000 U.S. Gallons	Ladder	One T304 Stainless Steel With Platform Top Step And Dimpled Channel Rungs (Located Curbside)
Code	DOT-407	Walkway	12" Wide Aluminum Safety Grating Curbside Of Spilldam Connected To 19" Wide Aluminum Safety Grating To Cleanouts
Shell & Head Material	10 Gauge T316L Stainless Steel With 2B Finish & W4 Welds	Spilldam	T304-2B Stainless Steel, Two External Plastic Drains
Heat System	Full Length Heat And Steam, Equipped For In-Transit	Outlet Valve	3" T316 Stainless Steel Hydrolet Valve
Manhole	20" Full Opening, T316 Stainless Steel	Emergency Valve	4" X 3" X 90" T316 Stainless Steel Quick Clean Chemical Hydraulic Valve
Overturns	At Ends Of Spilldam And Past Each Cleanout	Pressure Relief Vent	3" Girard Pressure Relief Vent Installed In Spilldam
Cleanouts	Three 3" T316L Stainless Steel One Located In Spilldam And One Each 10' From Tank Ends	Vacuum Venting	3" Girard Magnetic Vacuum Breaker Installed In Spilldam
Reinforcing Rings	Stainless Section Welded To Barrel	Hose Carrier	Two 8" X 22" Aluminum, Doors On Both Ends
Shell Subframe	T304 Stainless Steel Crossmember, Outriggers And Gussets	Lights	Truck-Lite Lights & Harness System, Side Center Marker Lights Wired To Flash With Turn Signals
Insulation	Fiberglass-6" Compressed To 5"	Fenders	Walker Aluminum Fenders At Front And Rear
Jacketing	22 Gauge Bright Annealed T304 Stainless Steel	Thermometer	One Bulb Type, 0° F To 300° F, 6' Above Ground Near Curbside Center
Outer Heads	18 Gauge Blown Heads With #3 Finish	Sealing Provisions	Provided At All Openings
Suspension	Hendrickson Intraax With 5" Intergral Axle, 71.5" Track And 23,000 Lb. Rating		
Hubs	Conmet, Aluminum 10-Stud Hub Piloted With 5 Year/500,000 Mile Warranty		



T304-2B Stainless Steel Spilldam With 12" Wide



6" Fiberglass Insulation, Compressed To 5"

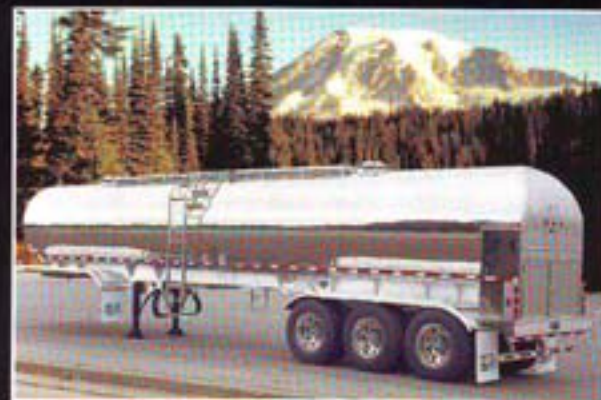


Frame & Cradle Farm Pickup

Capacity	6,500 U.S. Gallons	Suspension	Hendrickson Intraax With 5" Intergral Axle, 71.5" Track And 23,000 Lb. Rating
Code	3-A Sanitary	Hubs	Conmet, Aluminum 10-Stud Hub Piloted With 5 Year/500,000 Mile Warranty
Shell Material	12 Gauge T304 Stainless Steel With #4 Finish & W5 Welds	Tires	11R-22.5 (G) Goodyear Wingfoot Radials With 14-Ply Rating
Head Material	11 Gauge T304 Stainless Steel With #4 Finish & W5 Welds	Wheels	8.25 X 22.5 For 10 Hole Hubs, Aluminum Mill Finish, Hub Piloted
Manhole	One Walker 19" Stainless Steel Sanitary With Stainless Steel Dust Cover	Pumping Cabinet	Two-Compartment, Two-Door, 3-A Sanitary Cabinet
Frame & Cradle	Aluminum	Motor	3 H.P. 230 Volt - Double Pulleys
Insulation	3" Polyurethane In Cradle And On Heads 3" Polystyrene On Sides And Top	Pump	Centrifugal Or Positive Placement Pumps Available
Jacketing	22 Gauge Bright Annealed T304 Stainless Steel, 20 Gauge Bright Annealed T304 Stainless Steel At Ends	Lights	Truck-Lite Lights & Harness System, Side Center Marker Lights Wired To Flash With Turn Signals
Outer Heads	Front: 18 Gauge Blown Heads With #3 Finish Rear: 16 Gauge With Slip Joint At Rear		



FRAME & CRADLE FARM PICKUP



Tri-Axle Farm Pickup Trailer



14 Gauge Outer Head



Bolster Farm Pickup

Capacity	7,500 U.S. Gallons	Suspension	Hendrickson Intraax With 5" Intergral Axle, 71.5" Track And 23,000 Lb. Rating
Code	3-A Sanitary	Hubs	Conmet, Aluminum 10-Stub Hub Piloted With 5 Year/500,000 Mile Warranty
Compartments	Two Compartments, Equal Split	Landing Gear	Holland Mark V 2-Speed, 200,000 Lb. Static Load, 11.5" X 12" Sand Shoes
Shell Material	8' - 10 Gauge (4" Top, 4" Bottom), Balance 12 Gauge With #4 Finish & WS Welds	Ladder	Two T304 Stainless Steel With Platform Top Step And Dimpled Channel Rungs (Located One Each Side)
Head Material	11 Gauge T304 Stainless Steel With #4 Finish & WS Welds	Pumping Cabinet	Two-Compartment, Two-Door, 3-A Sanitary Cabinet
Manhole	Two Walker 19" Stainless Steel Sanitary With Stainless Steel Dust Covers	Motor	3 H.P. 230 Volt - Double Pulleys
Reinforcing Rings	Stainless Section Welded To Barrel		
Cradle & Frame	T304 Stainless Steel Crossmember, Outriggers And Gussets		
Insulation	3" Polystyrene		
Jacketing	22 Gauge Bright Annealed T304 Stainless Steel		
Outer Heads	Front: 18 Gauge Blown Head With #3 Finish Rear: 16 Gauge #3 Rolled Crown With Slip Joint		



Security Manhole



Ladder/Walkway/CIP Assembly



Truck-Mounted Bulk Pickup Tank

Capacity	5,800 U.S. Gallons	Outer Heads	Front: 18 Gauge #3 Finish Stainless Steel With Pittsburgh Lock Seam Rear: 16 Gauge Rolled #3 Finish Stainless Steel
Barrel Shape	Elliptical, 76" X 86"	Pump	Centrifugal Or Positive Placement Pumps Available
Code	3-A Sanitary	Ladder	T304 Stainless Steel With Knurled Rungs Located One Each Side With Step Extension On Bottom 3 Rungs Of Ladder
Shell Material	12 Gauge T304 Stainless Steel With #4 Finish & WS Weld Finish	Pumping Cabinet	Two-Compartment, Two-Door, 3-A Sanitary Cabinet
Head Material	10 Gauge T304 Stainless Steel With #4 Finish & WS Weld Finish	Motor	3 H.P. 230 Volt - Double Pulleys
Manhole	One Walker 19" Stainless Steel Sanitary With Stainless Steel Dust Cover With 4 Hold-Downs And Neoprene Gasket, Seal Tab Provisions Included	Lights	Grote Lights And Harness System With Seal Beam Light
Reinforcing Rings	One Piece, Aluminum I-Beam Tension Fit		
Cradle Frame & Outriggers	14 Gauge Stainless Steel Cradle, Stainless Steel Wrap Angles & Stainless Steel Outriggers Frame 1/4" Stainless Steel		
Insulation	2" Polyurethane Foam In Cradle 2" Polystyrene On Side And Top 2" Polyurethane Foam On Heads		
Jacketing	Wrap: 20 & 22 Gauge Bright Annealed T304 Stainless Steel		



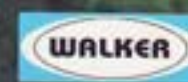
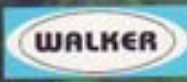
Utility Cabinet



Pumping Cabinet

BOLSTER FARM PICKUP

TRUCK-MOUNTED PICKUP





FINANCING

Financing

Our exclusive Walker Express Financing program offers a wide range of credits from small owner-operators to large trucking and construction companies.

Drawing from our proven industry expertise and experience, we have developed a unique combination of products and services to meet your financing needs:

- 100% financing of the equipment + FET, under both loan and lease options.
- Dedicated exclusively to Walker customers and dealers. A Walker Express Financing representative is readily available by telephone or fax to arrange financing.
- Transactions up to \$100,000 can be approved with just a completed credit application. No financials needed!
- Credit approval within 24-48 hours.

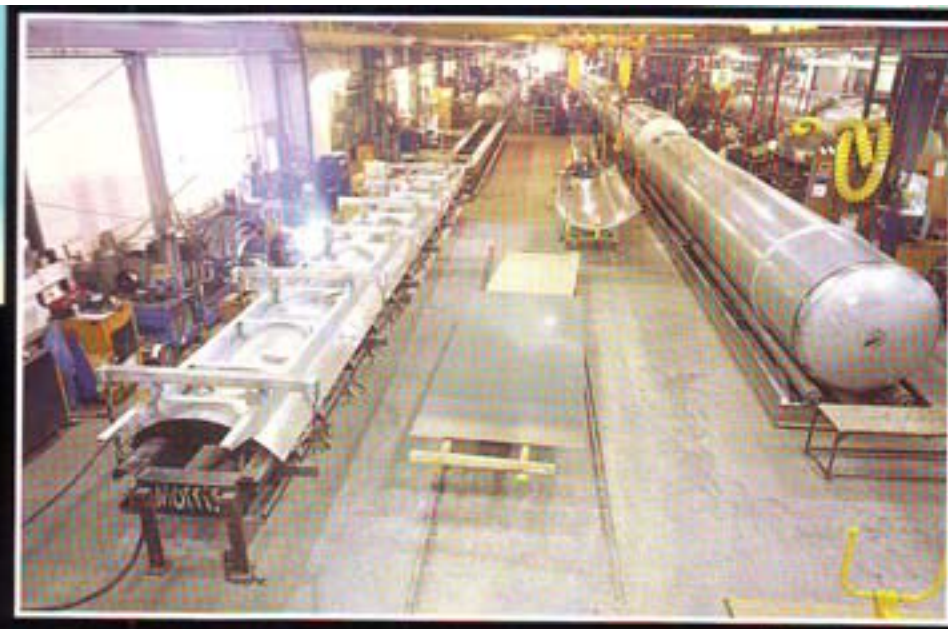
We offer innovative payment programs which are designed with an understanding of the changing demands of your business. We know about cash flow and understand that your business may be affected by seasonal slow periods. We provide Skip Payment and Deferred Payment plans that accommodate these changes and help you meet your business objectives. Our competitive rates and flexible terms are designed to make a Walker purchase as comfortable and affordable as possible.

- Financing terms range from 24 to 84 months.
- We offer a full suite of financing structures, including Loans, Finance Leases and TRAC Leases that provide for a predetermined purchase option at lease maturity.
- We assure competitive rates comparable with national leasing and financing companies.

Your Walker Express
Financing Representatives

Financial Services:
877-860-5450

Direct Sales:
800-356-5734



Warranty & Features

We have continually led the industry with our full **three-year limited warranty** on all of our **transportation tanks** used in the Dairy, Food, Beverage, Chemical and Pharmaceutical Industries. This warranty is our customers' assurance of quality design, craftsmanship and fulfillment of requirements to meet or exceed 3-A, U.S.D.A., A.S.M.E. and other industry standards.

Additionally, we pride ourselves on being the most versatile transport manufacturer in the industry. When it comes to special needs or customization, we will assist you with a great collection of designs, fabrication, accessories and options that will perfectly match your required needs.

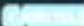
We have built the reputation of offering only quality transport equipment. That realization has come about because of our technological design know-how; personalized problem-solving and engineering; specialized purchasing; precise project manufacturing and testing; our knowledgeable sales team; a large network of service and repair facilities; and our next-day delivery from our extensive parts inventory.

We welcome the opportunity to prove to you that we take service further.

WARRANTY & FEATURES





A  COMPANY

625 State St. • New Lisbon, WI 53950

Phone: 608-562-3151 • 800-356-5734 Fax: 608-562-3142

www.walkertransport.com • E-mail: transportsales@walker.carlisle.com